



DOUBLE CONCRETE POWER TROWEL ISOPLAM 90 CM / 120 CM



USER MANUAL

Business Man Manual – Parts book

ISOPLAM

s.r.l.

Via E. Mattei 4
31010 Maser TV
Italy
info@isoplam.it
www.isoplam.co.uk

DOUBLE CONCRETE POWER TROWEL
ISOPLAM 90 CM / 120 CM

SERIAL NUMBER

SPECIFICATIONS

Model	90 CM	120 CM cm
Engine model	Honda GX-630 20 Hp	Honda GX-690 24 Hp
Power unit weight	Kg 245	Kg 286
Path	1940 mm 72"	1940 mm 72"
Maximum speed	140 rpm	140 rpm
Fuel capacity	15 lit.	15 lit.
Estimate Running Time	3 hours	3 hours
Sound Level	105 dB(A)	105 dB(A)
Vibration	<2.5 m/s ²	<2.5 m/s ²

GENERAL SAFETY GUIDELINES

Failure to follow instructions in this manual may lead to serious injury or even death! This equipment is to be used by qualified and trained personnel only. This equipment should not be operated by persons under 18 years of age.

Always use proper heavy lifting techniques when moving equipment.

Always make sure that machine is kept in proper operating condition.

Always have throttle position at idle while starting engine.

Always check to make sure that operating area is clear before starting engine.

Always test safety equipment including the safety engine kill mechanisms before operating equipment.

Never place feet on or inside the guard ring while starting the engine.

Never operate this equipment without proper protective clothing including footwear.

Always keep clear of rotating parts when operating.

Never operate with belt guard or any other guards removed.

Never leave machine unattended while running.

Never refuel while engine is running or while engine is hot.

Always refuel in a well ventilated area, away from sparks and open flames.

Never smoke while refueling.

Exhaust fumes are lethal! Operate machine in a well ventilated area, away from places where fumes can accumulate.

SAFETY INFORMATION

FOLLOW ALL SAFETY INSTUCTION

Read all safety instructions carefully. Safety instructions will be found throughout this manual and on the machine. Keep all safety information in good, readable condition. If needed, replacement safety information is available.

Proper machine operation includes training for operators. Operators should be versed on machine safety and operation. Never allow a person who is not properly trained to operate this equipment.

Keep this machine in proper working condition. This includes keeping all safety decals on the machine clean and visible.

Do not modify this machine. Doing so may cause improper operation and may not be safe. This may also reduce machine life. Modifying this machine in any way will void the warranty.

OPERATE MACHINE SAFETY

Always be aware of the operational area of your machine. Operators need to be careful to keep bystanders and nearby objects at a safe distance from the machine. Never let someone who is untrained operate this machine.

Study the operational area carefully. Remove all dangerous objects from the finishing area. (i.e. protruding rebar or wood). Do not attempt to use the machine where operation appears to be dangerous.

Keep the machine properly maintained and in good working order. This mainly entails keeping the machine clean and serviced. This will allow the finisher to perform to its fullest potential and provide the longest operational lifetime. Check the safety kill switch before and after every operation. It is good practice to stop the machine with the safety kill switch, to ensure it is operating properly.

Always try to do most work during daylight hours or with sufficient artificial lighting.

Visibility must be good for this machine to be used effectively.

Never operate machinery when tired or ill. Operators must be alert and always looking for possible signs of danger or misuse of machinery. Do not operate the machine in dangerous surroundings.

FUEL

FUEL

Handles fuel safely. Motor fuels are highly flammable and can be dangerous if mishandled. Do not smoke while refueling. Do not refuel if the engine is hot and running. Always shut off fuel flow with the fuel line valve after every machine use. Never store the machine with fuel in the tank for any extended period of time.

Clean up spilled fuel immediately.

PERSONAL PROTECTIVE EQUIPMENT

Always wear proper clothing while operating this equipment. Protective clothing includes (but is not limited to): boots, long sleeve shirt, long pants, gloves, hearing protection and safety eyeglasses. Consult with the construction site foreman to determine what protective clothing is required on the construction site.

HAZARDOUS MATERIALS

Exposure and mishandling of hazardous material can cause personal injury or damage the environment. Potentially hazardous material used on this machine may include the following: lubricant, fuel, paints and adhesives.

Take care to handle hazardous material properly. MSDS information sheets are available upon request.

MAINTENANCE SAFETY

Cautions! Disconnect spark plug wires before attempting service.

Before attempting maintenance on this machinery, know the procedure and have the correct tools. Always make sure that machine is stopped and the spark plug wires and battery are disconnected before attempting service.

Securely support any machine components that must be raised for service (i.e. trowel arms). Never lubricate the machine or attempt service on a running machine. Always allow the machine proper time to cool before servicing.

Keep machinery in proper running condition. Make sure that there is no buildup of concrete, grease, oil or debris. Keep all parts properly installed. Fix damage immediately and always replace worn or broken parts.

Dispose of potentially hazardous waste properly. Examples of potentially hazardous waste are: motor oil, fuel and filters. Use rigid containers for trapping these items. Do not use old food or beverage containers, someone may be misled. Do not pour waste oil or fuel directly onto the ground, down a drain or into any water source.

Inquire what the proper disposal procedures are for waste fuel and oil in your local area.

TROWEL FINISHER SERIES----INSTUCTIONS

Putting Into Service

Before packing and shipping, this power Trowel was run and tested at the factory. If there are any problems, please let us know.

Before putting your new finisher into service, read all manuals and instructions carefully. Improper setup, use or maintenance of your equipment could result in personal injury or damage to equipment.

The purpose of this section of the manual is to explain the intend setup, use and maintenance of this equipment.

Assembly

90 CM/120 cm ride-on trowel are full assembly in the factory. No need to assembly anything by end user!

DO NOT LIFT THE MACHINE BY GUARD RINGS.

Before Starting

1. Read and follow the engine operation manual before running.
2. Add fuel and water into the tank. Yellow tank is for fuel, white tank is for water.



3. Connect the battery wire. Red wire is to positive, black is to negative



4. Add the oil to engine according to the engine manual. And check the gear-box oil level.
5. Adjust the chair to the comfortable position for the operator



Machine

Operations

Starting

1. put left feet on stop switch panel(left the foot will stop the engine)
2. turn on the fuel pump valve which locate in the back of machine
3. pen the engine choke



Honda

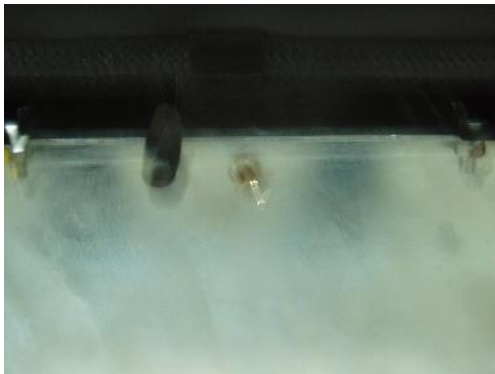
4. Turn the key and starting the engine
5. After running 3 minutes with idle speed then close the engine choke
6. Trample the throttle with right feet operation the machine.

Operation

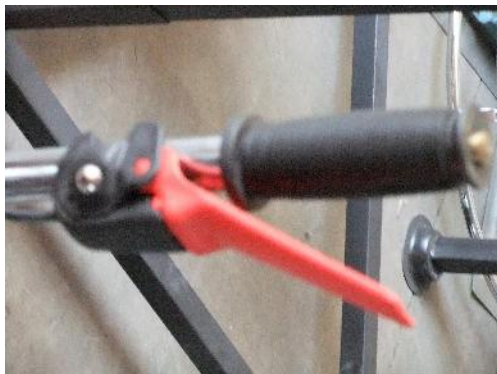
1. Trample the engine throttle panel increasing the blade speed
2. Moving direction
 - Forward: push 2 control bars forward
 - Reserve: push 2 control bars reserve
 - Right side: move 2 control bars to right side
 - Left side: move 2 control bars to right side
 - Turning: right hand control bar forward, left hand bar reserve to turn anticlockwise
 - Right hand control bar reserve, left hand bar forward to turn clockwise

Always look behind you to avoid hazards before moving backwards.

3. Light switch
light switch locate under the chair



4. Water pump
Water pump install in the back side switch in on the left hand control bar



Cleanup

NEVER allow concrete to harden on the power trowel.

Immediately after use, wash any concrete off your trowel with water. Be careful not to spray water on the engine. An old paintbrush or broom may help loosen any concrete that has started to burden.

Coat the blades and blade arms with diesel fuel after cleaning. This should help prevent rusting and allow for easier cleanup in the future.

Maintenance (service, Adjustment and repair)

NOTE: See the engine manual supplied with your machine for appropriate engine maintenance schedule.

There is a “Daily Preparation Check List” at the end of this manual. Please feel free to make copies of it and use it on a daily basis.

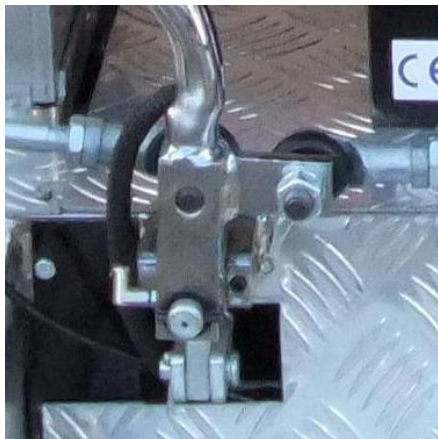
Maintenance schedule

Daily (8-10 Hours)

Check the gearbox oil lever daily

Check the fluid levers in the engine and gearbox.

Check the connect link control for loosen



Weekly (50-60 Hours)

Relubrication arms, thrust collar and clutch.

Replace the blades if necessary.

Check and clean or replace the engine air filter as necessary.

Monthly (100-200 Hours)

Remove, clean, reinstall and relubrication the arms, thrust collar and clutch.

Adjust the blade arms.

Yearly (200-2500 Hours)

Check and replace if necessary the arm bushings, thrust collar bushing, shaft seals and belt.

Check pitch control cable for wear.

SERVICE PROCEDURES

Checking Belt Tension

The first indication of belt wear is a reduced blade speed despite the engine running at full speed. Inspect belts often for signs of damage or excessive wear.

There is no method for manual adjustment of belt tension. Excessively worn belts must be replaced.

There are some things to look for when checking to see if adjustment is necessary. Is the machine wearing out blades unevenly (i.e. one blade is completely worn out while the others look new)? Does the machine have a perceptible rolling motion? Look at the machine while it is running, do the guard rings “rock up and down” relative to the ground? These are some indications that the blade pitch needs to be adjusted.

Changing a Blade

We recommend that all the blades be changed at the same time. The machine may wobble or bounce if only some of the blades are changed at one time.

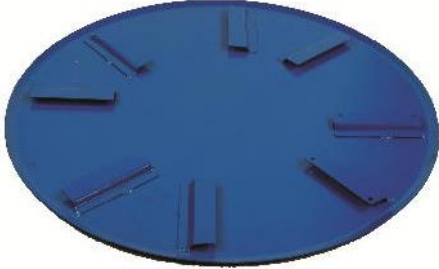
1. Place the machine on a flat, level surface. Adjust the blade pitch control to make the blades as flat as possible. Note the blade orientation on the trowel arm.
2. Remove the bolts and lock washers on the trowel arm, then remove the blade.
3. Scrape all concrete particles from the trowel arm,
4. Install the new blade, maintaining the proper orientation for direction of rotation.
5. Affix the bolts and lock washers.
6. Repeat steps 2-6 for all of the remaining blades.



Float Discs

We provide 2 models ride-on machine. One is pan machine, the other is overlap machine.

These round discs attach to the spider and allow the machine to “float” on “wet” concrete. The disc design allows early floating and easy movement from wet to dry areas. They are also quite effective in embedding large aggregates and surface hardeners.



Conformity Declaration CE

Conforms to the II A Attached, of the 2006/42 CE Directive
Conforms to the II Attached, of the 2000/14 CE Directive

The **ISOPLAM S.r.l** company

DECLARES

Under its exclusive responsibility

That the machine

**DOUBLE CONCRETE POWER
TROWEL**

Type

90 CM-120 CM cm

Serial number N. _____

It is according with the conditions foreseen from the directives (and further modifications)

2006 / 42 CE

Concerning the rapprochement of the legislations of the member States relative to the machines.

2014 / 30 CE

Concerning the rapprochement of the legislations of the member States relative to the electro-magnetic compatibility.

2014 / 35 CE

Concerning the rapprochement of the legislations of the member States relative to the electric material assigned to be used within some limits of voltage.

2000 / 14 CE

Ambient acoustic emission of machines and equipment for the open work.

Level of sonorous powering of measured similar machine: 105 dBA

Level of sonorous guaranteed powering for the equipment: 105 dBA

(D.Lgs. n.262/2002)

Urbino,

Signature
The Representative Legal

PROHIBITION OF PUTTING IN SERVICE

It cannot be put in service, after to have undergone the constructive modifications or integrations of other components not falling within the ordinary or extraordinary maintenance, without that it is still declared according to the requirements of the directives: 2006/42/CE, 2014/30/CE, 2014/35/CE and 2000/14/CE to other directives of reference and to the norms in force.

Date,

The Owner

SECURITY NORMS

The machine has been realized in according with the security norms under indicated:

UNI EN ISO 12100-1	Security of the machinery - Fundamental concepts, general principles of planning. – (Part 1: Terminology of base, methodology).
UNI EN ISO 12100-2	Security of the machinery - Fundamental concepts, general principles of planning. – (Part 2: Technical principles).
UNI EN ISO 13857:2008	Security of the machinery – Distance of security to prevent the achieving of dangerous areas with superior limbs.
UNI EN 953:2009	Security of the machinery – Shelters – general requirements for the planning and the building of fixed and movable shelters.
CEI EN 60204-1	Security of the machinery – Electric equipment of machines (Part I: general Norms)